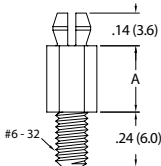




# THREADED MALE CIRCUIT BOARD SUPPORTS

## HMSP-TM Hex Mini Support Post

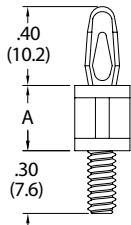


Snap-Fit:  
.152 (3.9)  
Panel Thickness:  
.062 (1.6)

- Specifications:
- Material: Nylon 6/6
  - Color: Natural
  - Flame Class: UL94 V-2

Item No.	A		Bulk Pack Qty.
	In	mm	
HMSP-TM-2-01	0.125	3.2	1000
HMSP-TM-3-01	0.188	4.8	1000
HMSP-TM-4-01	0.250	6.4	1000
HMSP-TM-6-01	0.375	9.5	1000
HMSP-TM-8-01	0.500	12.7	1000
HMSP-TM-10-01	0.625	15.9	1000
HMSP-TM-12-01	0.750	19.1	1000
HMSP-TM-14-01	0.875	22.2	1000

## CBS-TM Circuit Board Support, Threaded Male



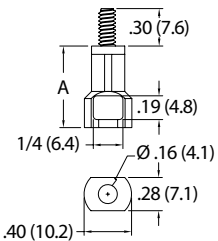
Top Hole:  
Snap-fit: .156 (4)  
Panel Thickness:  
.062 (1.57)

Bottom Hole:  
#6-32 Male Thread

- Secure using nylon hex nut item number HN-6-32-01 (see page 813)
- Material: Nylon 6/6
- Color: Natural

Item No.	A		Bulk Pack Qty.
	UL94 V-2	UL94 V-0	
CBS-TM-4-01	CBS-TM-4-19	1/4 (6.4)	1000
CBS-TM-6-01	CBS-TM-6-19	3/8 (9.5)	1000
CBS-TM-8-01	CBS-TM-8-19	1/2 (12.7)	1000
CBS-TM-10-01	CBS-TM-10-19	5/8 (15.9)	1000
CBS-TM-12-01	CBS-TM-12-19	3/4 (19.1)	1000
CBS-TM-14-01	CBS-TM-14-19	7/8 (22.2)	1000
CBS-TM-16-01	CBS-TM-16-19	1 (25.4)	1000
CBS-TM-18-01	CBS-TM-18-19	1 1/8 (28.6)	1000
CBS-TM-20-01	CBS-TM-20-19	1 1/4 (31.8)	1000
CBS-TM-22-01	CBS-TM-22-19	1 3/8 (34.9)	1000
CBS-TM-24-01	CBS-TM-24-19	1 1/2 (38.1)	1000

## SRSCBS Snap Rivet Studded Circuit Board Support



Top Hole:  
#6-32 Male Thread

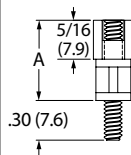
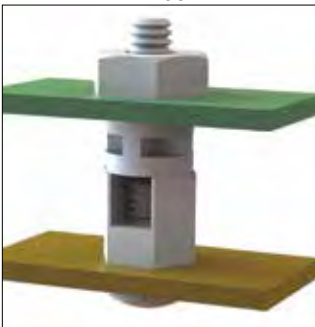
Bottom Hole:  
Snap Rivet:  
.161 - .165 (4.1 - 4.2)  
Panel Thickness:  
See Rivet Table

Rivet Table	
Use Richco Rivet Item No.	For Chassis Thickness
SR-4050	.026-.062 (0.7-1.6)
SR-4060	.062-.105 (1.5-2.7)
SR-4070	.105-.145 (2.7-3.7)
SR-4080	.145-.184 (3.7-4.7)
SR-4090	.184-.223 (4.7-5.7)
SR-4100	.223-.263 (5.7-6.7)
SR-4120	.262-.341 (7.2-8.7)

- Designed to mount easily on chassis with plastic SR rivet sold separately (see Rivet Table)
- Mounts to PC board with nylon hex nut, item number HN-6-32-01 (see page 813)
- Allows mounting to a range of panel thicknesses; up to .341 thick
- Button head on rivet for minimal protrusion on chassis underside
- Material: UL94 V-2 Nylon 6/6
- Color: Natural

Item No.	A		Bulk Pack Qty.
	UL94 V-2	UL94 V-0	
SRSCBS-6-01	3/8 (9.5)		1000
SRSCBS-7-01	7/16 (11.1)		1000
SRSCBS-8-01	1/2 (12.7)		1000
SRSCBS-10-01	5/8 (15.9)		1000
SRSCBS-12-01	3/4 (19.1)		1000
SRSCBS-14-01	7/8 (22.2)		1000
SRSCBS-16-01	1 (25.4)		1000

## CBS-TFM Circuit Board Support Threaded Female-Male



Top Hole:  
#6-32 Female Thread

Bottom Hole:  
#6-32 Male Thread

- Both ends can be secured with nylon nuts and/or screws. See Fasteners section for details.
- Material: Nylon 6/6
- Color: Natural

Item No.	A		Bulk Pack Qty.
	UL94 V-2	UL94 V-0	
CBS-TFM-6-01	CBS-TFM-6-19	3/8 (9.5)	1000
CBS-TFM-8-01	CBS-TFM-8-19	1/2 (12.7)	1000
CBS-TFM-10-01	CBS-TFM-10-19	5/8 (15.9)	1000
CBS-TFM-12-01	CBS-TFM-12-19	3/4 (19.1)	1000
CBS-TFM-14-01	CBS-TFM-14-19	7/8 (22.2)	1000
CBS-TFM-16-01	CBS-TFM-16-19	1 (25.4)	1000